



Help your child explore and practice mathematics with the **Quantile Framework<sup>®</sup> for Mathematics**, a scientific approach to help your child succeed.

### Support and Monitor Your Child's Math Progress With the Quantile Scale

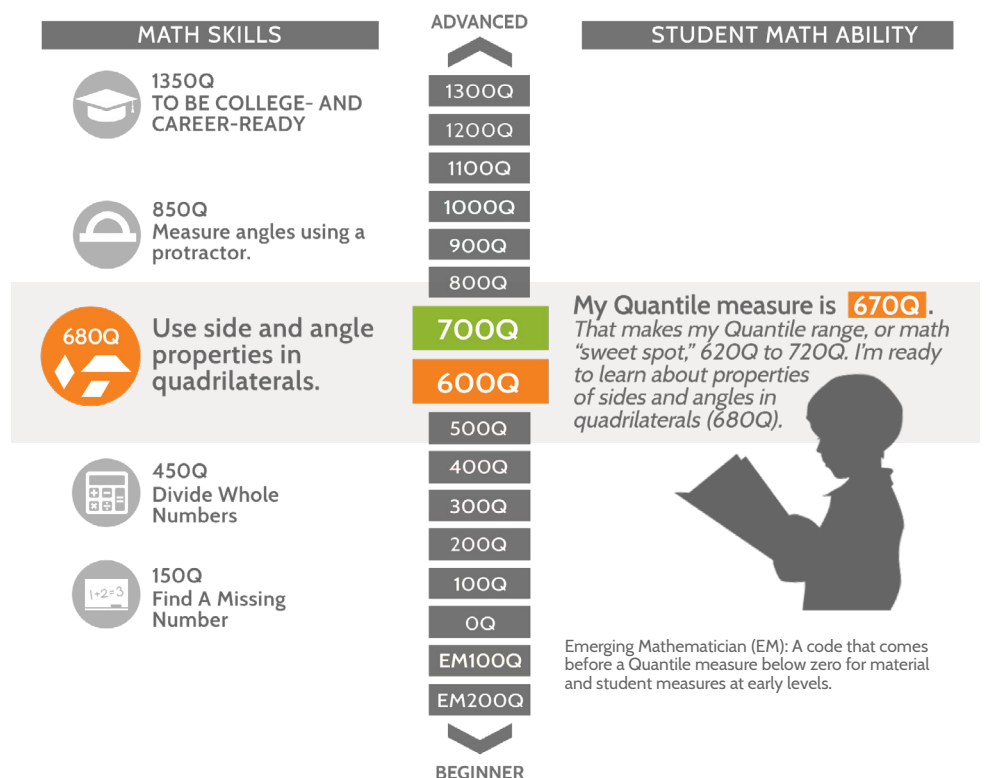
The Quantile Framework defines over 550 mathematics skills and concepts. Each of these concepts has a Quantile measure. Each measure shows how difficult one skill is in relation to the others. Quantile measures range from below 0Q to above 1400Q and span the skills and concepts taught in kindergarten through high school.

#### What Is the Quantile Framework?

The Quantile Framework uses the same scale to measure both the child's mathematical ability and the difficulty of the math materials they encounter. Quantile measures help you find math skills and concepts that are at your child's level. Quantile measures can be used to:

- ➔ **Match** materials to a child's skill level to reinforce the concepts taught at school.
- ➔ **Monitor** progress over time.

A Quantile measure is represented by a number followed by a "Q" such as "800Q".





# HOW PARENTS USE QUANTILE MEASURES

## STEP 1 Determine Your Child's Quantile Measure



Quantile measures are reported from a variety of tests taken throughout the school year. If you're not sure what test your child took, ask your child's teacher. Many state assessments and math programs report math performance as a Quantile measure.

## STEP 2 Practice Math That Supports Your Child



Matching your child's math ability to the difficulty of math material helps to ensure the right level of challenge. Let's say your child has a Quantile measure of 680Q and is learning about quadrilaterals. You can find...

**...EASIER TASKS (530Q)**

Which angle appears to be an acute angle?

**...TASKS AT THEIR LEVEL (680Q)**

Which quadrilateral is a rectangle and a rhombus?

**...HARDER TASKS (1000Q)**

Polygon KLMNP is concave.

Which segment, with endpoints on the interior of the polygon, shows that KLMNP is concave?

## STEP 3 Monitor Growth



Track your child's Quantile measure growth from grade to grade. Use these measures in conversation with your child's teacher to identify how your child can be better supported or challenged at home and school.

## Access Math & Reading Tools for Your Child

The **Lexile® & Quantile® Hub** is an online platform that provides easy access to math and reading tools. We listened to feedback from educators, parents and students to develop our tools. Math tools include:



Find family-friendly activities to support your child's mathematics learning.



Forecast growth and explore the math demands for hundreds of careers.

Find tools at the  
**Lexile & Quantile Hub!**

VISIT [HUB.LEXILE.COM](https://hub.lexile.com)