



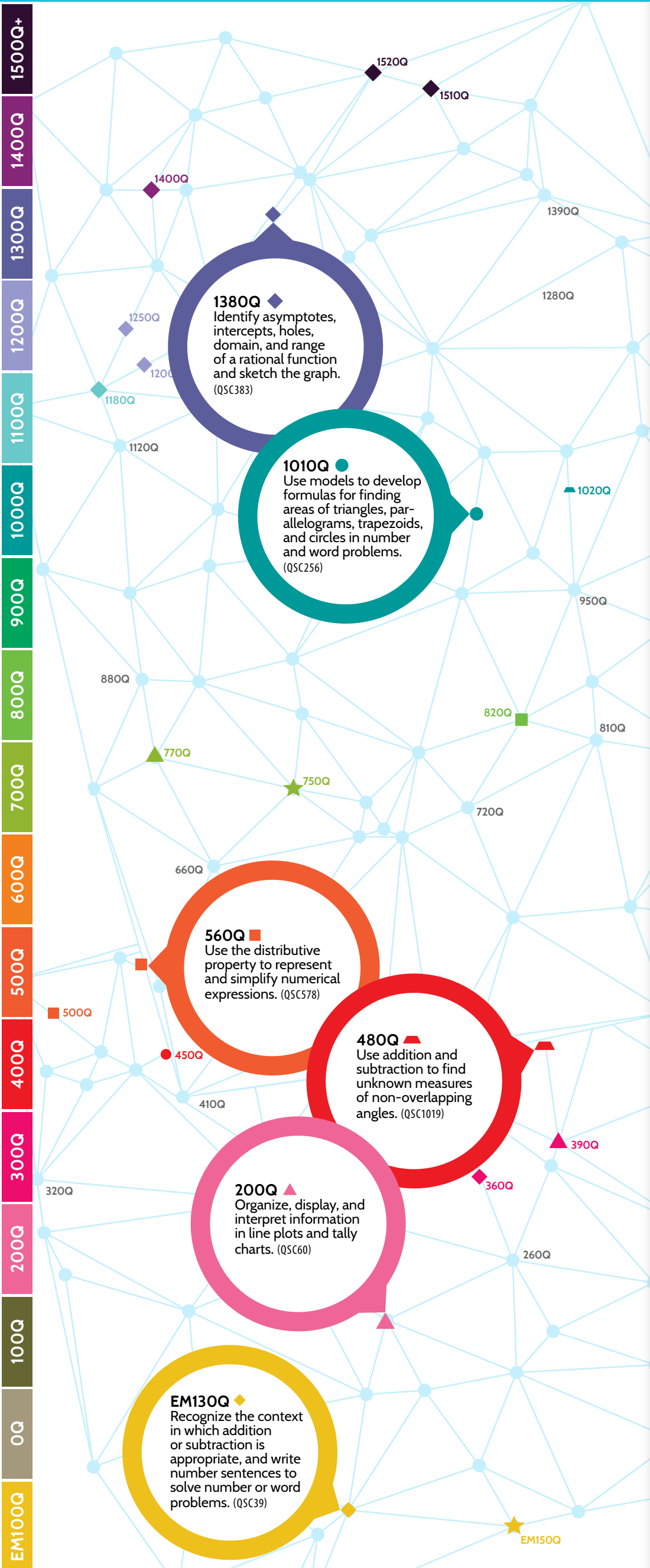
QUANTILE FRAMEWORK[®] FOR MATHEMATICS

Linking Assessment With Mathematics Instruction



QUANTILE SKILLS & CONCEPTS (QSCS) ORGANIZED BY QUANTILE MEASURE

EXEMPLARS FROM OVER 500 QUANTILE SKILLS & CONCEPTS



- | Quantile Measure | Sample Quantile Skills & Concepts |
|------------------|--|
| 1520Q | Identify continuous and discontinuous functions and locate points of discontinuity. |
| 1510Q | Graph tangent, cotangent, secant, and cosecant functions and identify the domain, range, period and asymptotes of the function. |
| 1400Q | Use the definition of a hyperbola to identify characteristics, write an equation and graph the relation. |
| 1380Q | Identify asymptotes, intercepts, holes, domain and range of a rational function and sketch the graph. |
| 1250Q | Identify the undefined values of rational algebraic expressions. |
| 1200Q | Identify and interpret zeros of a quadratic function using factoring in algebraic and word problems. |
| 1180Q | Use and interpret function notation in number and word problems; determine a value of the function given an element of the domain. |
| 1020Q | Define and identify complementary and supplementary angles. |
| 1010Q | Use models to develop formulas for finding areas of triangles, parallelograms, trapezoids and circles in number and word problems. |
| 820Q | Rewrite or simplify algebraic expressions including the use of the commutative, associative and distributive properties, and inverses and identities, in number and word problems. |
| 770Q | Organize, display and interpret information in stem-and-leaf plots. |
| 750Q | Describe the effect of operations on size and order of numbers. |
| 560Q | Use the distributive property to represent and simplify numerical expressions. |
| 530Q | Estimate and compute products of whole numbers with multi-digit factors. |
| 500Q | Use order of operations including parentheses and other grouping symbols to simplify numerical expressions. |
| 480Q | Use addition and subtraction to find unknown measures of non-overlapping angles. |
| 450Q | Determine the area of rectangles, squares, and composite figures using nonstandard units, grids and standard units in number and word problems. |
| 390Q | Organize, display and interpret information in tables and graphs (frequency tables, pictographs and line plots). |
| 360Q | Write addition and subtraction sentences that represent a number or word problem; solve. |
| 200Q | Organize, display and interpret information in line plots and tally charts. |
| EM130Q | Recognize the context in which addition or subtraction is appropriate, and write number sentences to solve number or word problems. |
| EM150Q | Describe, compare and order objects using mathematical vocabulary. |

GLOSSARY

Emerging Mathematician (EM): A code that comes before a Quantile measure below zero for material and student measures at early levels.

Quantile Skill and Concept (QSC): The description of a skill and its Quantile measure.

For more information and free tools, visit the *Lexile*[®] & *Quantile*[®] Hub at Hub.Lexile.com.

◆ ALGEBRA & ALGEBRAIC THINKING

★ NUMBER SENSE

■ NUMERICAL OPERATIONS

● MEASUREMENT

▲ GEOMETRY

▲ DATA ANALYSIS, STATISTICS & PROBABILITY